

UK CPN case

Dr Suvarna

This is not really for comments, but I think it is interesting and worth showing

Try and make the diagnosis just from the macroscopic view !!

Case data

61 male

History of early deaths in family from presumed IHD.

Collapsed and died suddenly.

Recently unwell with pancreatitis.

Autopsy

Unusual appearance heart (504 g)

Cratered gastric ulcer with some bleeding

Congested lungs (right 567, left 666 g)

Gallstones

Irregular scarred pancreas

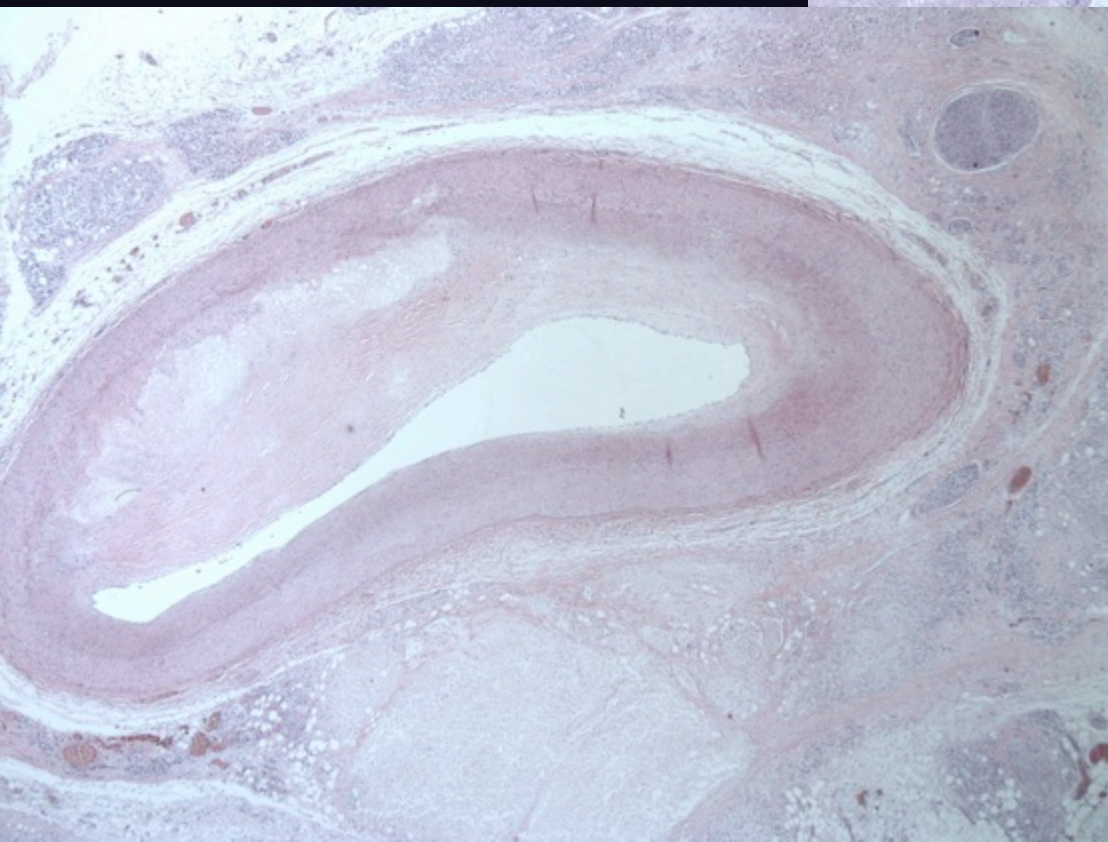
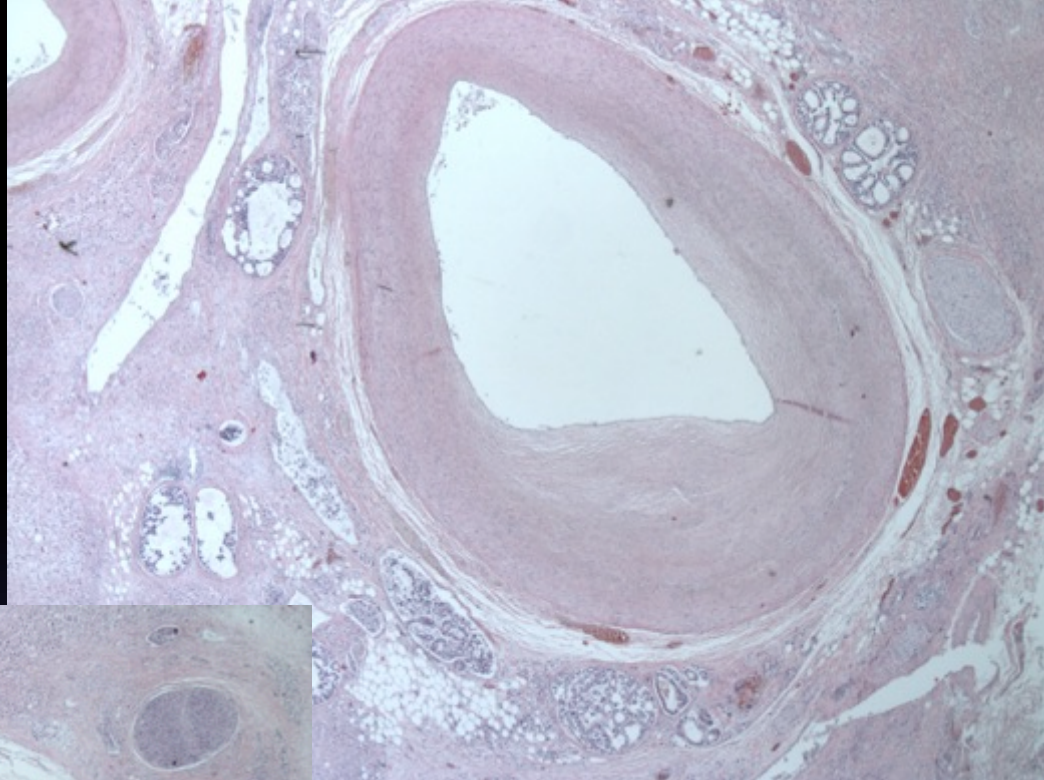
Macroscopic view



Histology view

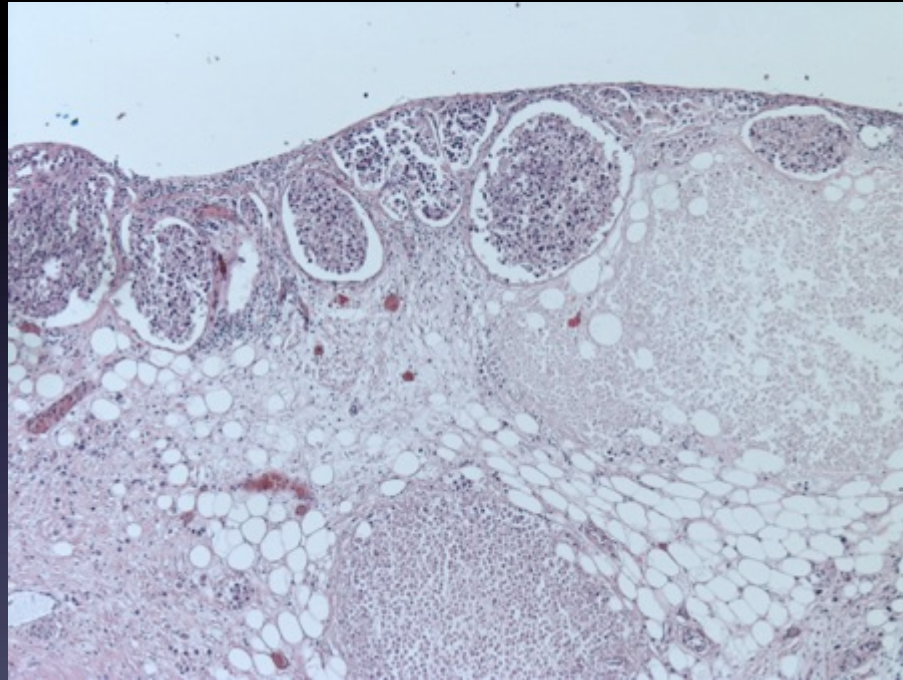
LAD

RCA

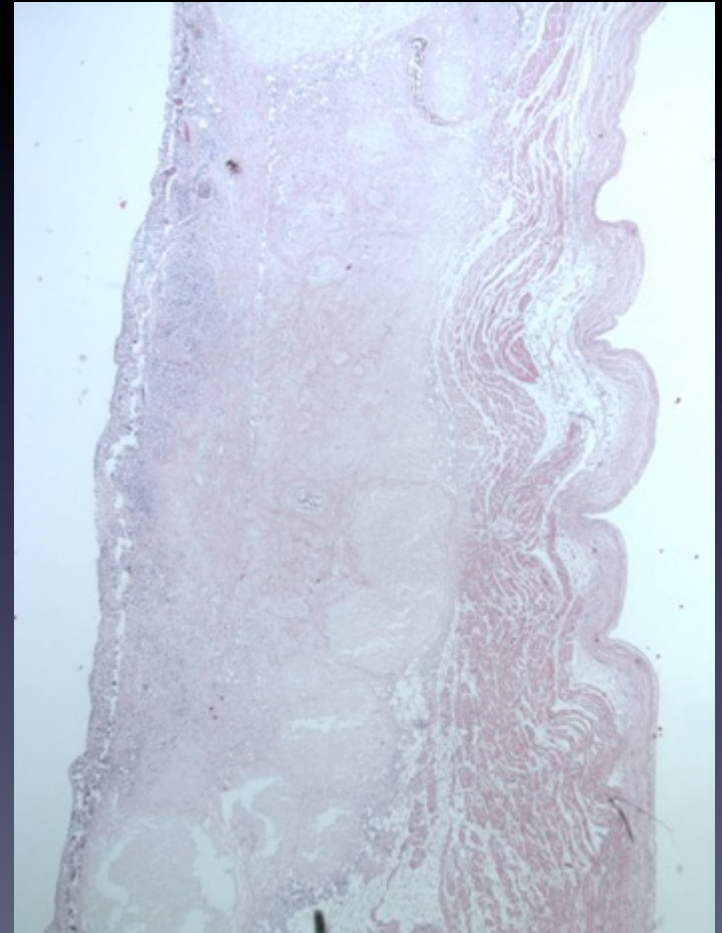


Histology view

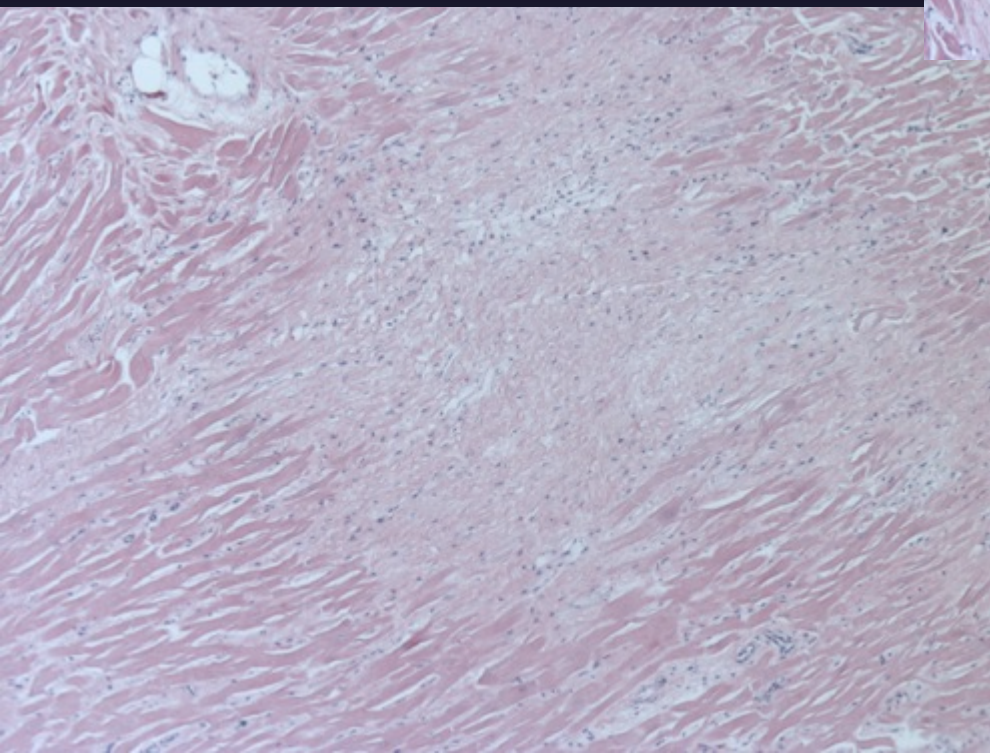
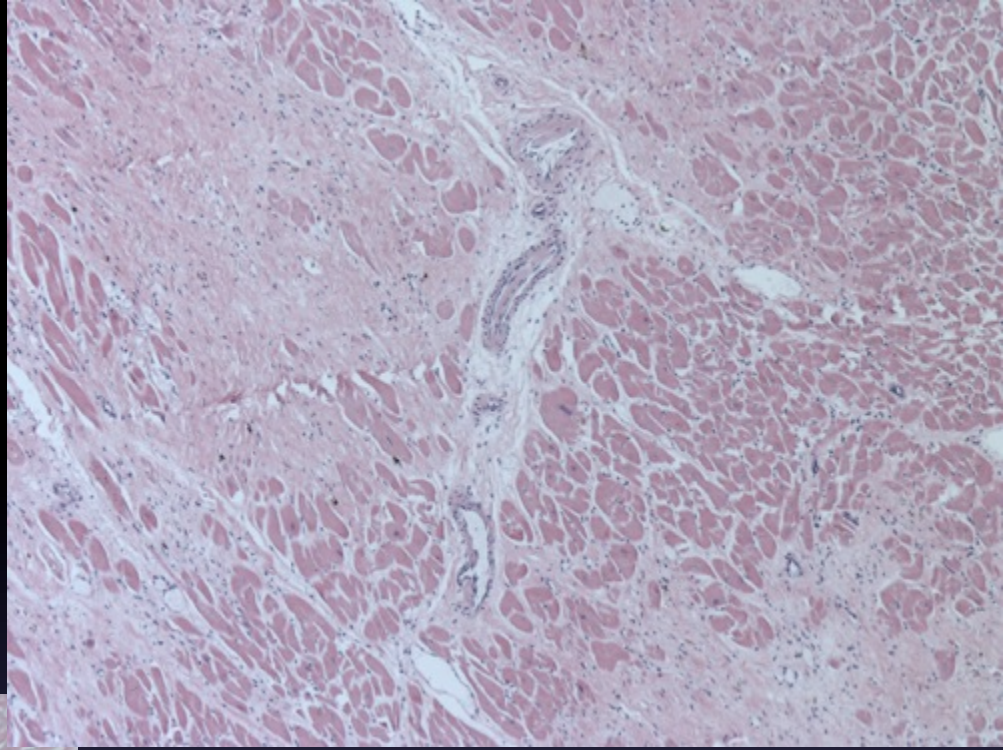
Epicardial surface



SAN

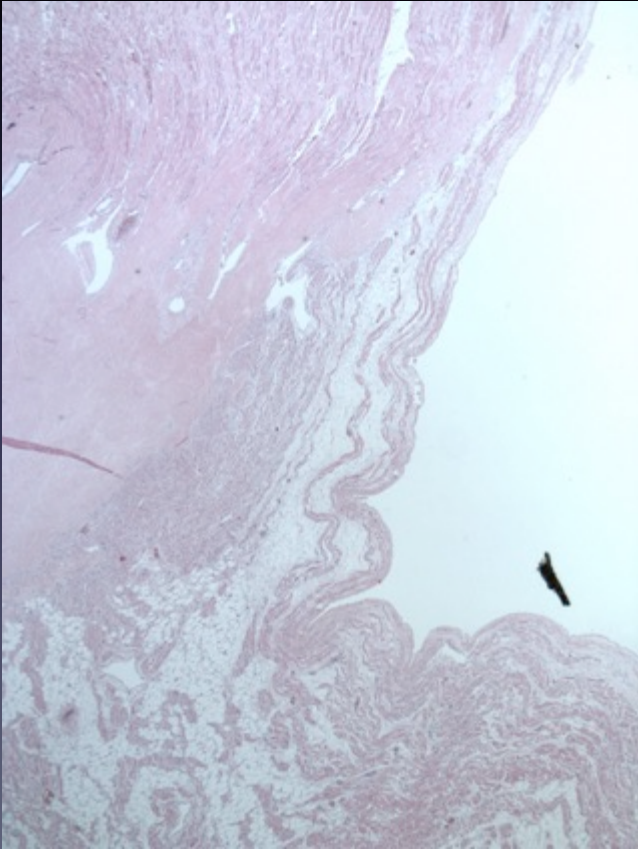


Histology view
L ventricle

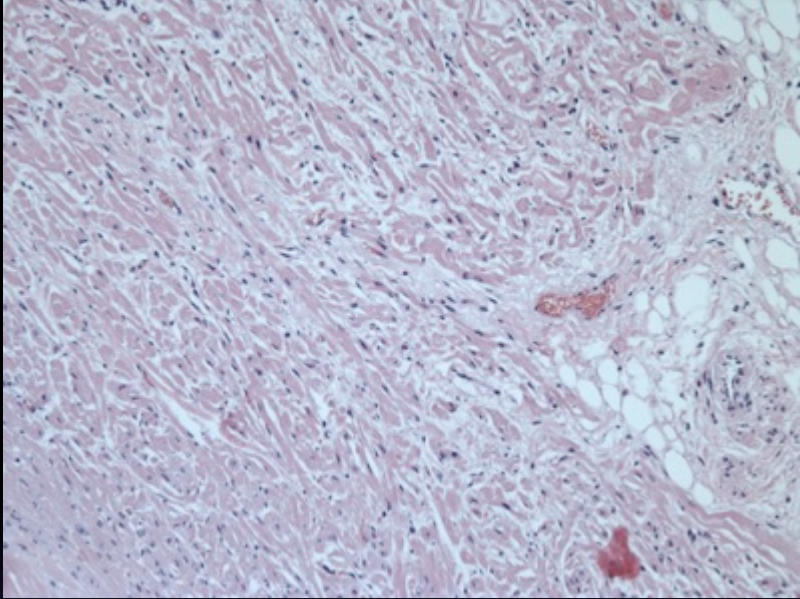


Histology view

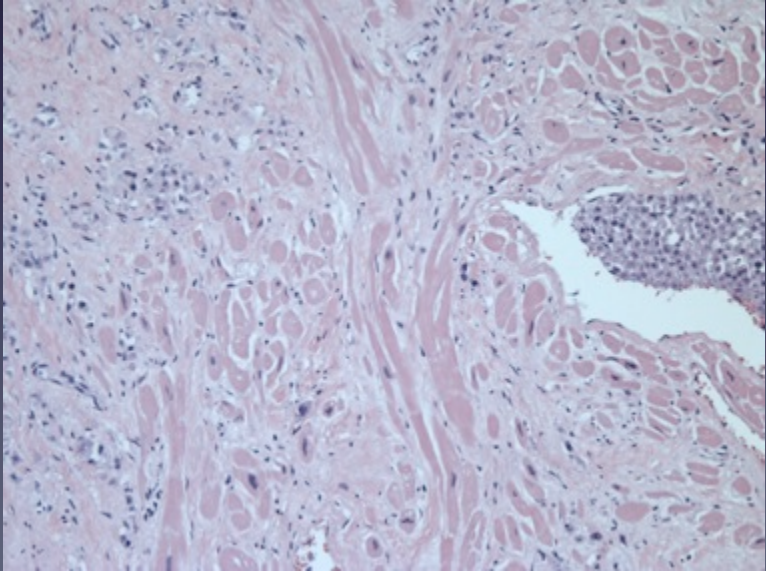
(AVN low mag)



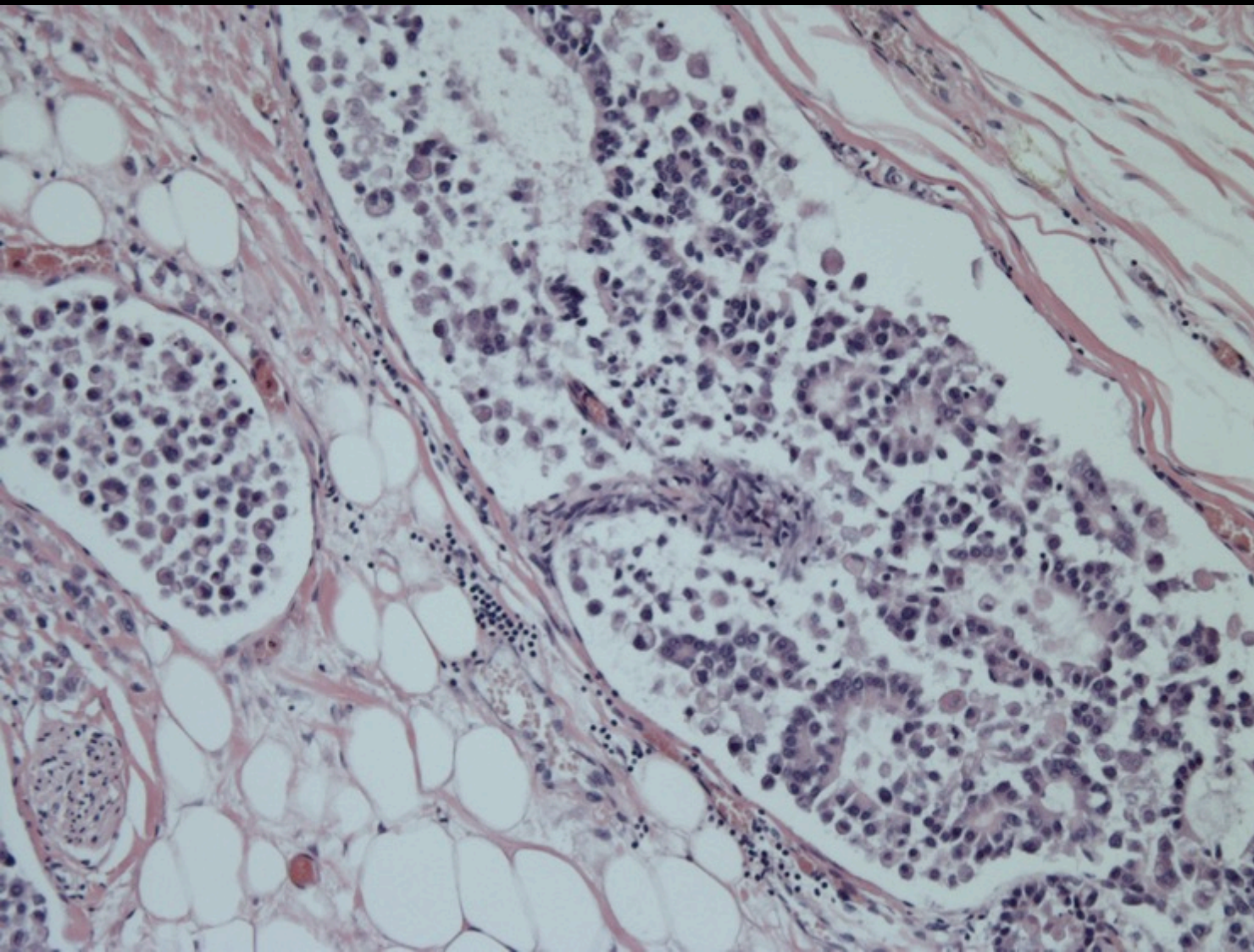
AVN high mag



Just next to AVN



High magnification epicardial tissues L ventricle



An interesting case with

1. Background coronary disease, likely reflecting family genetic issues
2. Coronary narrowing exacerbated by compressive metastatic pancreatic adenocarcinoma widely infiltrating the heart