

# UK CPN case Dr Coetzee

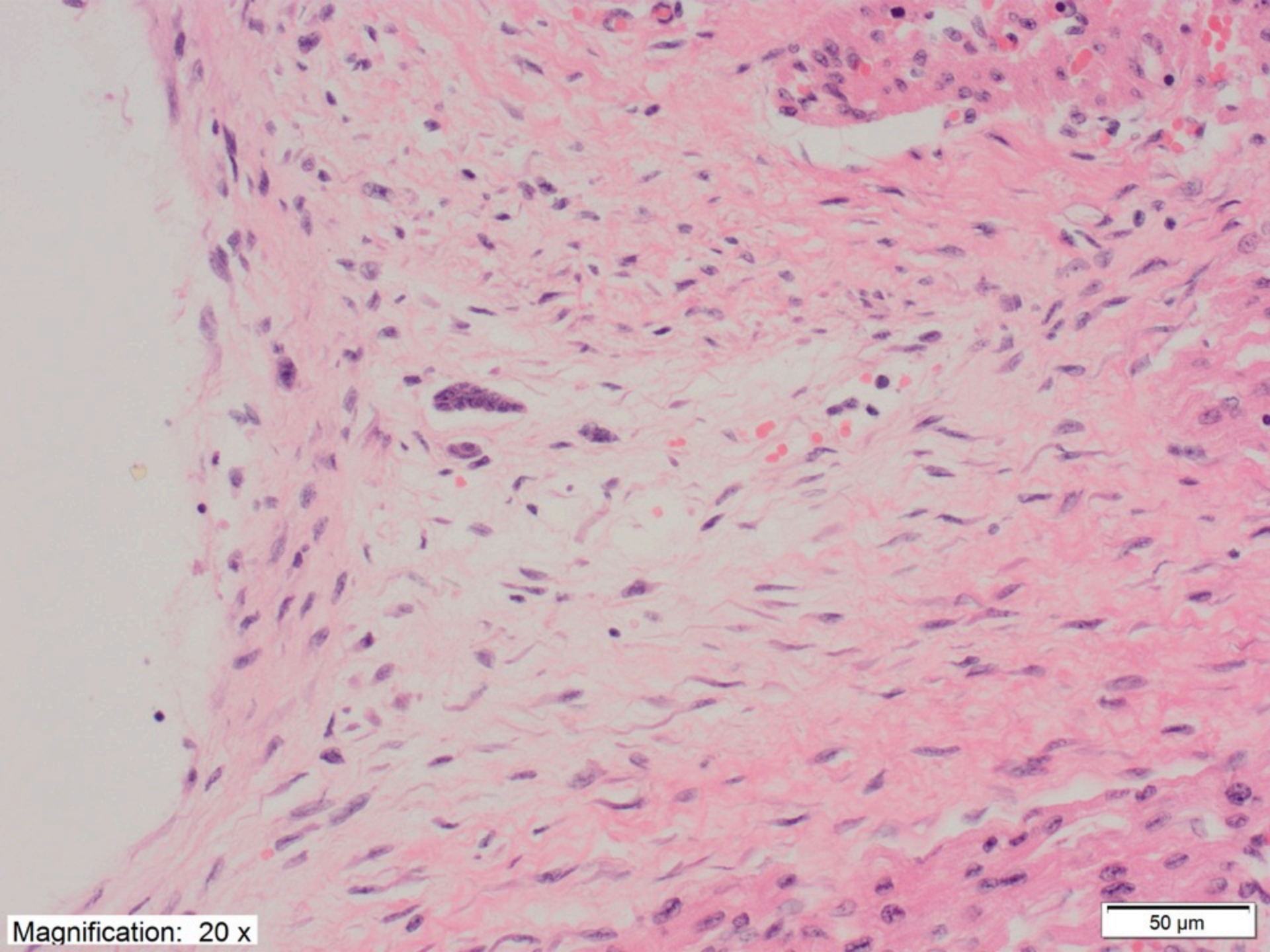
This is a case of a 1 month old infant who likely died of SIDS .

These images are taken from the AV node region.

What significance would you place on the pleomorphic cells seen?

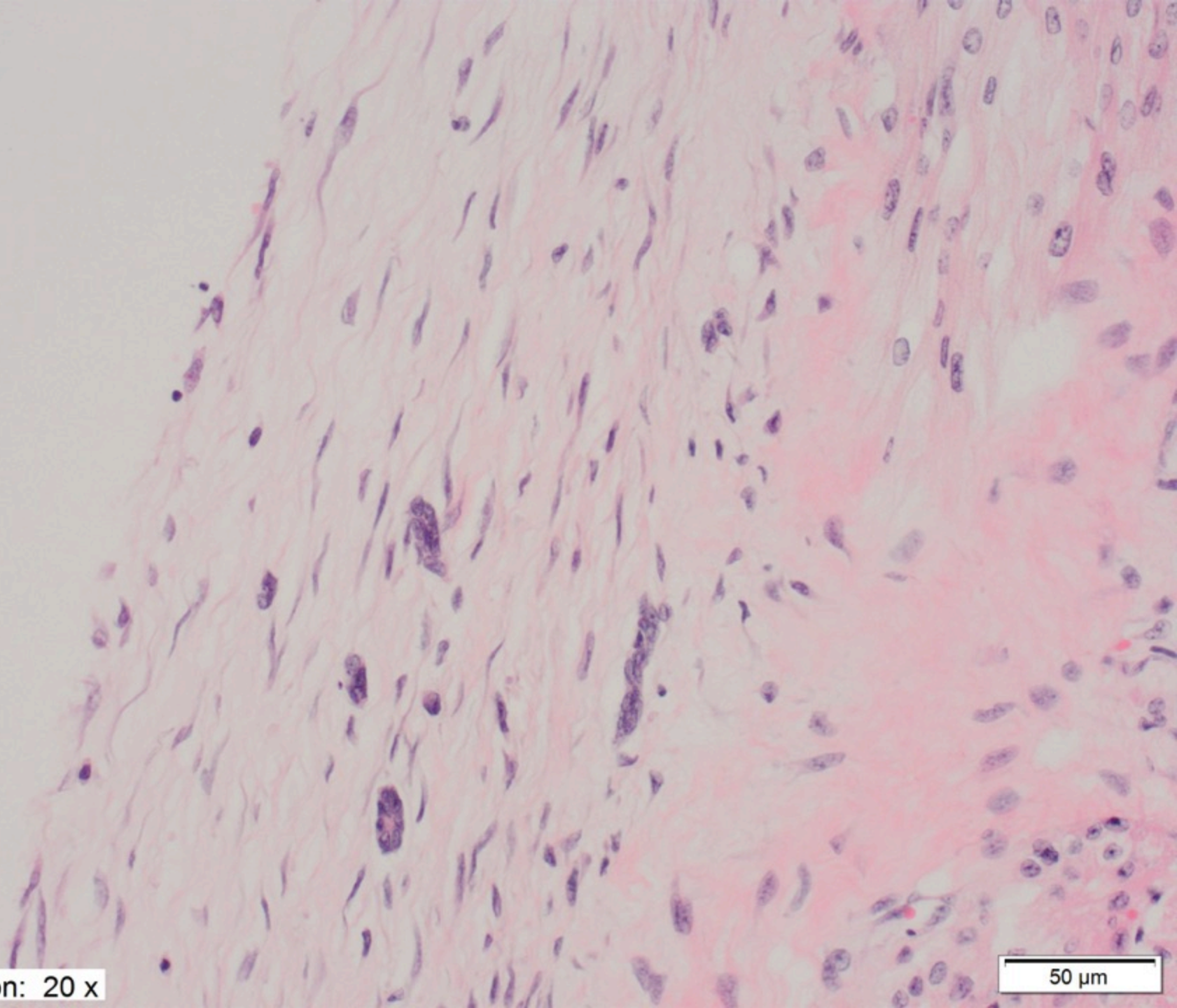
Magnification: 20 x

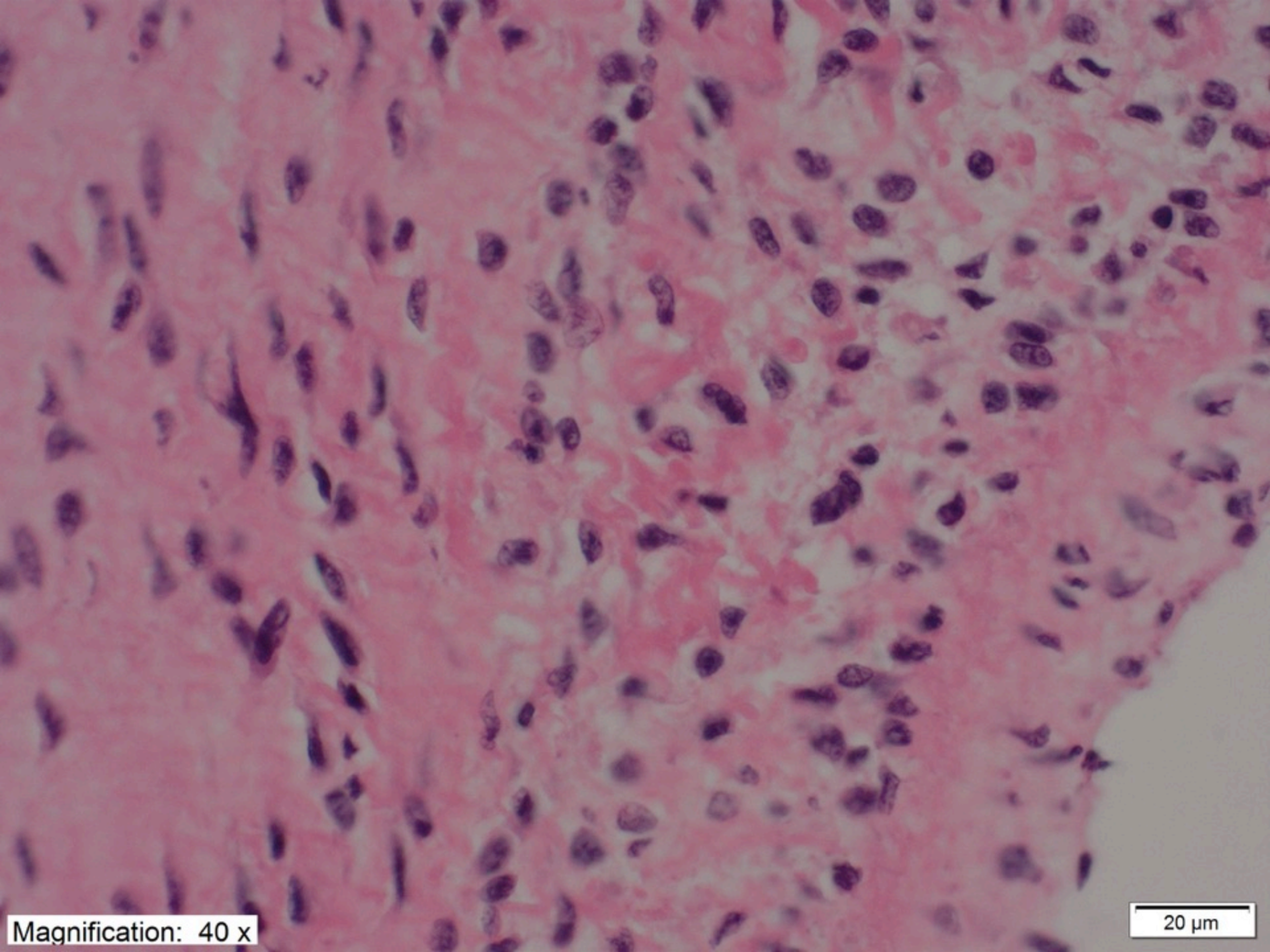
50  $\mu$ m



Magnification: 20 x

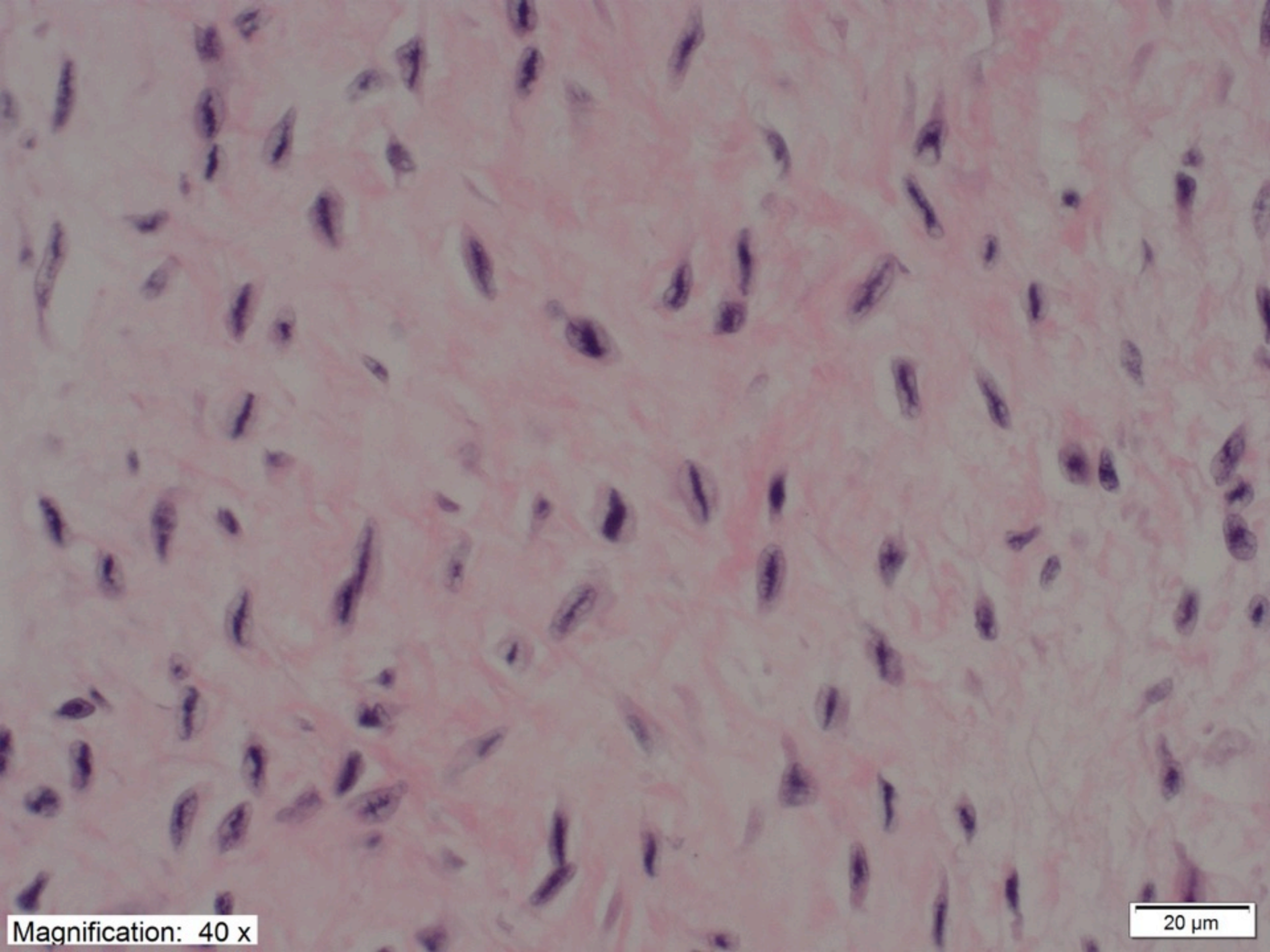
50  $\mu$ m





Magnification: 40 x

20  $\mu$ m



Magnification: 40 x

20  $\mu$ m